

# Wildfire ignition probability in Belgium

*Authors:*

**Arthur DEPICKER** (*arthur.depicker@kuleuven.be*)

KERMIT, DEPARTMENT OF DATA ANALYSIS AND MATHEMATICAL MODELLING  
GHENT UNIVERSITY  
Coupure links 653  
9000 Ghent  
Belgium

**Bernard DE BAETS** (*bernard.debaets@UGent.be*)

KERMIT, DEPARTMENT OF DATA ANALYSIS AND MATHEMATICAL MODELLING  
GHENT UNIVERSITY  
Coupure links 653  
9000 Ghent  
Belgium

**Jan M. BAETENS** (*jan.baetens@UGent.be*)

KERMIT, DEPARTMENT OF DATA ANALYSIS AND MATHEMATICAL MODELLING  
GHENT UNIVERSITY  
Coupure links 653  
9000 Ghent  
Belgium

# Abstract

In recent decades, large wildfires have inflicted considerable damage to valuable Natura 2000 regions in Belgium. Despite these events and the general perception that global change will exacerbate wildfire prevalence, the phenomenon has not been studied yet in the Belgian context. Therefore, the national government initiated the National Action Plan Wildfires in order to evaluate the wildfire risk, on the one hand, and the materials, procedures, and training of fire services, on the other hand.

This study focuses on the spatial distribution of the ignition probability, a component of the wildfire risk framework. In a first stage, we compile a historical wildfire database using (i) newspaper articles between 1994 and 2016, and (ii) a list of wildfire interventions between 2010 and 2013, provided by the government. In a second stage, we use a straightforward method relying on Bayes' rule and a limited number of covariates to calculate the ignition probability.

It appears that most wildfire-prone areas in Belgium are located in heathland where military exercises are held. The provinces that have the largest relative areas with a high or very high wildfire risk are Limburg and Antwerp. Our study also revealed that most wildfire ignitions in Belgium are caused humans (both arson and negligence), and that natural causes such as lightning are rather scarce. Wildfire prevention can be improved by (i) excluding military activity in fire-prone areas during the fire season, (ii) improving collaboration with foreign emergency services, (iii) concentrating the dedicated resources in the areas that display the highest ignition probabilities (iv), improving fire detection methods, and (v) raising more awareness among the population.

## Keywords

*Wildfire, ignition probability, risk analysis, Bayes' rule, Belgium*

## Summary

In recent years, several valuable nature reserves in Belgium have been severely damaged by wildfires. In order to optimize wildfire management, an ignition probability map is developed for Belgium, based on an inventory compiled through a government database and newspaper articles.

# 1 Introduction

Every year, wildfires burn an astonishing 350-450 million hectares of forest and grassland globally, an area corresponding to approximately 4% of earth's land surface, Antarctica and Greenland not taken into account (Randerson et al., 2012; Giglio et al., 2010). The general perception is that wildfire frequency and damage are increasing due to more extreme weather events and altered precipitation and temperature patterns (National Wildlife Federation, 2008; IPCC, 2014; North et al., 2015; Doerr and Santin, 2016). Wildfires inflict physical and mental harm (Liu et al., 2014; Youssouf et al., 2014; Eisenman et al., 2015; Navarro et al., 2018) and damage infrastructure (Syphard et al., 2013; Penman et al., 2015).

Despite their increasing threat, wildfires in Belgium have not received any attention in literature. On the one hand, this gap can be justified by the lack of casualties and the low wildfire frequency, but, on the other hand, fires have been inflicting considerable damage to valuable nature areas (San-Miguel-Ayanz et al., 2012a). The latter has prompted the federal government to initiate the National Action Plan Wildfires, for which one of the objectives is to perform a wildfire risk assessment.

However, there is no unambiguous framework for assessing wildfire risk (Hardy, 2005; Miller and Ager, 2013; San-Miguel-Ayanz et al., 2017). Following the IPCC framework of natural hazard risk, the European Commission (EC) defines wildfire risk as a function of (i) hazard and (ii) vulnerability. The former refers to the occurrence of an incident, and is a combination of fire ignition and spread. The second component, wildfire vulnerability, is a measure of the presence of ecological and socioeconomic assets that can be damaged by fire, and the extent to which one can anticipate, resist, cope with, or recover from this damage (IPCC, 2012; San-Miguel-Ayanz et al., 2017).

Within this study, we focus on the wildfire ignition probability and its spatial distribution. First, the study area is presented together with the spatial data, necessary for the assessment. Second, we introduce a method that relies on Bayes' rule and a limited number of covariates to assess the probability. In Section 3, the resulting ignition probability map (IPM) is presented, and lastly we discuss the results and include some recommendations for future wildfire management in Belgium.

## 2 Materials & Methods

### 2.1 Study Area: Belgium

Belgium is a western European country and a member state of the European Union. It is bordered by France to the south, Luxembourg and Germany to the east, the Netherlands to the north, and the North Sea to the west. Belgium has a temperate maritime climate that is characterized by four distinct seasons: spring, summer, fall and winter. It has a total area of approximately 30,528 km<sup>2</sup> and a population of more than 11.2 million. The average population density is 363 inhabitants per km<sup>2</sup>, though the northern region, Flanders, is much more densely populated than the southern region, Wallonia (Fig. 1, 562 inh./km<sup>2</sup> versus 214 inh./km<sup>2</sup>) (Belgian Federal Government, 2016).

Within wildfire literature, this region has not received any attention. Therefore, in the following paragraphs, we will discuss the **(i)** prevalence, **(ii)** damage, **(iii)** detection and suppression, and **(iv)** prevention of wildfires in Belgium, as well as **(v)** the National



Action Plan Wildfires, which was introduced by the Federal Public Service Internal Affairs (2013) to improve the aforementioned management aspects.

**(i) Prevalence** The prevalence of wildfires in Belgium is rather limited. The annual burnt area rarely exceeds 40 hectares, but depending on the meteorological conditions relatively large areas –in a Belgian context– can be affected. Unfortunately, these fires often occur in biologically valuable nature areas. In 2011, for instance, 2144 hectares of land burnt within the Natura 2000 network (mainly in the Kalmthoutse Heide and les Hautes Fagnes, symbol A en B in Fig. 1), consisting of protected nature areas throughout the European Union (San-Miguel-Ayanz et al., 2012a). In this paper, a more detailed assessment of wildfire prevalence in Belgium is executed. The results are presented in Section 3.1.

**(ii) Damage** Since even the vaster wildfires in Belgium did not damage infrastructure or housing, while there have been no human casualties up to this day, it may be concluded that the damage cost of wildfires in Belgium is very limited. Essentially, wildfire damage occurs most frequently in natural areas, where wildfires might jeopardize the survival of vulnerable species like *Lyrurus tetrrix* (Jacob and Paquet, 2011) or promote the growth of undesired plant species such as competitive grasses (e.g. *Molinia cearulea*) that suppress the presence of characteristic plant species, such as *Calluna vulgaris* and *Erica tetralix* (Marrs et al., 2004; Jacquemyn et al., 2005; Schepers et al., 2014). Hence, wildfire research in Belgium is important from a biological, ecological, and nature conservation perspective.

In that respect, it is important to estimate the monetary value of nature in Belgium. Focusing on Flanders, Liekens et al. (2013) did this on the basis of a large-scale choice experiment to determine the willingness of households to pay for nature (€/household/year). These authors rank forest as the most valuable (€182), followed by heathland and inland dunes (€159), grassland (€158), open reed and swamp (€146), pioneer vegetation (€119), and marshes (€117). These monetary values should not be used to determine the value of nature areas, but rather to compare the value of different types of nature. It should also be noted that the monetary value of a burnt nature area is not necessarily affected in the long run since regeneration of the vegetation will often occur. Still, wildfires can alter the monetary value of an area if its cover changes from one type of nature to another. Even so, monetary value does not necessarily reflect ecological value.

**(iii) Detection and suppression** As a consequence of the high population density, wildfires in Belgium are rapidly detected and reported to the emergency services. Moreover, in some valuable nature areas extra efforts are made for an even more rapid detection. For instance, on days with a (very) high wildfire risk, in one of Flanders vastest nature areas (Kalmthoutse Heide) predominantly consisting of heathland, volunteers man a fire watch tower - a building structure that offers a clear view of the area, and immediately report any detected smoke or flames to the emergency services. Currently, this is the only way of wildfire detection in use.

Wildfires are suppressed by ordinary firefighters using their standard equipment, which is complemented with dedicated terrain vehicles to gain access to rough terrain, while some firefighters got a specific training in France (Federal Public Service Internal

Affairs, 2013). Belgium also lacks planes or helicopters that can be deployed in the case of wildfires, though in 2015 a bilateral agreement between Belgium and The Netherlands was signed to deploy a dedicated helicopter from The Netherlands in the case of major events (Ministry of Justice and Security, 2015). Also in the past, aerial means from neighboring countries were deployed in large-scale exercises in the Hoge Venen to fight the largest wildfires (Belga, 2013). Since wildfires are rather rare and mostly ordinary firefighting equipment is used, the suppression cost of wildfires in Belgium is expected to be a limited portion of the total budget spent to its emergency services.

**(iv) Prevention** The main prevention strategy in nature areas is to assign a color code reflecting the wildfire risk that is assessed by the terrain manager and local experts, and comes with specific guidelines for visitors and firefighters depending on the color code. 'Code green' means that there is a low wildfire risk, and in the unlikely event of a wildfire, the fire brigade follows the standard procedure in terms of the number of men. 'Code yellow' is associated with an elevated risk. For instance, in the Kalmthoutse Heide the watch tower is manned on such days. If a wildfire is detected in a region with 'code orange', the fire brigade will deploy extra men and equipment. Moreover, the fire watch tower is permanently manned and children can only play under parental supervision. Finally, 'Code red' means that the wildfire risk is very high and access to such areas is discouraged (ANB, 2017).

Another form of prevention is the construction or repair of firebreaks, as illustrated in the management plans for military domains (e.g. Vandenberghe et al., 2009; Waumans et al., 2009).

**(v) National Action Plan Wildfires** In the aftermath of the 2011 wildfires (San-Miguel-Ayanz et al., 2012a), and largely motivated by the shortcomings and problems detected while being faced when fighting relatively vast wildfires (up to 1000 ha), the National Action Plan Wildfires was compiled by the Directorate-General of the Federal Public Service Internal Affairs in order to evaluate and improve the risk analysis and cartography, materials, procedures and training, emergency planning, and exercises related to the outbreak of wildfires (Federal Public Service Internal Affairs, 2013). Although a preliminary risk map was constructed based on the qualitative feedback from emergency planning services and province governors, EU legislation dictates that a more scientifically sound approach should be used. This is important because the law states that forest areas classified as medium to high forest fire risk are eligible for financial support of the European Regional Development Fund. However, such a wildfire risk map must be backed up by scientific evidence and acknowledged by scientific public organizations, in agreement with Article 24 of Regulation (EU) No 1305/2013 of the European Parliament and of the Council of 17 December 2013 (the European Parliament and the European Council, 2013). In order to support the EU member states in arriving at such a map and to harmonize the used methodology across the EU member states, the European Commission has consulted the EU member states on how the JRC should proceed during the 2017 meeting of the Commission Expert Group on Forest Fires (REF). Moreover, the preliminary risk map included in the National Action Plan Wildfires did not account for how 'high risk' is perceived differently by the consulted parties across the country.

## 2.2 Wildfire inventory for Belgium

In order to conduct a wildfire ignition probability assessment for the Belgian territory, data on historical wildfire ignitions were needed. These data were collected in two ways. Firstly, a list of all wildfire interventions between 2010 and 2013 was provided by the Directorate-General of the Federal Public Service Internal Affairs. Secondly, the digital archives of several newspapers were searched. These archives covered the period 1985–2016, though, relevant data were retrieved for the period 1994–2016 only. The following newspapers were searched: *Gazet van Antwerpen*, *Het Laatste Nieuws*, *Het Belang van Limburg*, *Le Soir*, *L'Echo*, *La Dernière Heure*, *La Meuse*, *La Nouvelle Gazette*, *Metro*, and *L'Avenir*, thereby ensuring that most news items on wildfires throughout the country would be retrieved.

## 2.3 Modelling ignition probability

The definition of ‘wildfire risk’ varies greatly within literature (Miller and Ager, 2013; San-Miguel-Ayanz et al., 2017). In the past, many authors described risk as the probability of wildfire occurrence (e.g. Hardy, 2005; Catry et al., 2009). As a consequence, many wildfire risk assessments are, following the EC’s wildfire framework, in fact an assessment of the ignition probability. Common approaches for such an assessment involve data-driven methods such as logistic regression (e.g. Martinez et al., 2008; Catry et al., 2009; Vilar del Hoyo et al., 2011; Preisler et al., 2004), machine learning (e.g. Massada et al., 2012; Rodrigues and de la Riva, 2014), and a Bayesian weights-of-evidence modeling approach (e.g. Kolden and Weigel, 2007; Dickson et al., 2006). The latter method involves the use of Bayes’ rule to calculate weights for the different classes of input maps. These weights are then integrated per grid cell in a logit equation to obtain a probability (Dickson et al., 2006).

However, the main limitation of the aforementioned approaches is the lack of time-specificity. If the ignition probability in a grid cell equals 0.8, then how should this value be interpreted? Is there a probability of 80% that this pixel will burn in a given year? In this paper, we use a straightforward application of Bayes’ rule to tackle this issue. The ignition probability is defined as the probability that an ignition will occur during the course of one calendar year within a grid cell (Dawid et al., 2005):

$$P(I|C_i) = \frac{P(I) P(C_i|I)}{P(C_i)}, \quad (1)$$

where  $I$  indicates an ignition event and  $C_i$  contains the features that characterize the environment of cell  $i$ . Such an environment is defined as the specific combination of predictor classes.

In Eq. (1), the probability that a randomly selected cell belongs to class  $C_i$  is equal to

$$P(C_i) = \frac{\text{Area of } C_i}{\text{Total Area}}. \quad (2)$$

$P(C_i|I)$  is the probability that, given that an ignition took place in cell  $i$ , this cell belongs to class  $C_i$ , and was computed as:

$$P(C_i|I) = \frac{\text{Number of ignitions in } C_i}{\text{Total number of ignitions}}, \quad (3)$$

with the total number of ignitions determined by the number of ignitions used for the construction of the IPM. Finally, the probability that an ignition occurs in a random cell within the time span of one year was calculated as

$$P(I) = \frac{\text{Average annual number ignitions}}{\text{Total number of cells}}. \quad (4)$$

Due to the low number of wildfire occurrences in Belgium, the size of the wildfire inventory is expected to be rather limited, with only a few hundred registered wildfires. Therefore, the number of possible environments had to be kept relatively small, otherwise, too many environments without any recorded wildfires would be created. In this paper, the maximum number of environments was arbitrarily set at 20. An overview of the complete methodology is given in Fig. 2.

The annual ignition probabilities, which are calculated per grid cell, can be merged for larger areas using Eq. (5):

$$P_A = 1 - \prod_{i=1}^n (1 - p_i)^{N_i}, \quad (5)$$

where  $P_A$  is the probability that a certain area  $A$  containing  $n$  environments will be affected by a wildfire in the span of one year,  $p_i$  is the probability that a grid cell of environment  $i$  will burn within one year (Eq. (1)), and  $N_i$  is the number of grid cells of environment  $i$  within area  $A$ .

## 2.4 Predictors

We considered three categorical covariates: (i) land cover, (ii) soil, and (iii) land use (Fig. 3). Given the nature of the applied methodology (Section 3.1), the number of spatial layers was restricted to three. Due to this restriction, we did not integrate data on population density, precipitation, and distance to roads (e.g. Dickson et al., 2006) in the analysis. All layers were resampled to a 10 m resolution, and we used the  $\chi^2$  test of independence to determine whether there was a significant impact of each variable on the wildfire occurrence (McDonald, 2014).

The land cover vector dataset, dating from 2011, was obtained from the Belgian National Geographic Institute (NGI) and rasterized. This variable contains the following eleven classes: coniferous forest, deciduous forest, mixed forest, heathland, mixed heathland coniferous forest, mixed heathland deciduous forest, agricultural land, reed land, shrubland, urban land, and other. Different vegetation types can display a different wildfire susceptibility (Bond and van Wilgen, 1996). More in particular, in the context of Belgium, coniferous forests and heathland are more sensitive to wildfires than other vegetation types (Goldammer and Furyaev, 2013; Log et al., 2017).

The soil vector data were constructed for Flanders in 2016 by the Flemish Soil Database (DOV), and for Wallonia in 2007 by the Walloon Public Service (SPW). Six different classes are distinguished: rock, clay, loam, sand, fen/wetland, and other. Soil type is related with soil moisture (Kaleita et al., 2005), which influences the fuel condition and hence the ignition probability (Chuvieco et al., 2004; Chaparro et al., 2015).

The land use vector data were developed for Flanders in 2014 by the DOV, and

for Wallonia in 2016 by the SPW. We distinguish seven different land use classes: habitat, agriculture, military, economy/industry, recreation, nature conservation areas, and other. Land use impacts fire ignition and fuel loads (Van Butsic and Moritz, 2015). In Belgium, for example, military exercises are a known source of ignition due to the use of explosives.

The average population density in Belgium ( $363 \text{ inh./km}^2$ ) is much higher than in the Mediterranean countries: Spain ( $93 \text{ inh./km}^2$ ), Portugal ( $115 \text{ inh./km}^2$ ), France ( $118 \text{ inh./km}^2$ ), Greece ( $84 \text{ inh./km}^2$ ), and Italy ( $203 \text{ inh./km}^2$ ) (United Nations, 2015). Contrary to these countries, Belgium has few remote areas with low population densities that are not urbanized in one way or another. Moreover, the highest densities are to be found in urbanized areas where we expect no wildfires.

Precipitation in Belgium varies roughly between 700 and 1000 mm/yr, with peaks up to 1300mm/yr in the southeastern regions of the country like the Hautes Fagnes (Fig. 4 (a)) (Meersmans et al., 2016). Despite the high precipitation rates in this area, the Hautes Fagnes is known for its many and vast wildfires (e.g. San-Miguel-Ayanz et al., 2012a). Hence, rather than looking at the mean annual rainfall, it would be more advisable to use data on drought sensitivity, for example based on the precipitation deficit (Zamani et al., 2016). Figure 4 (b) shows the extent (days) of the most severe drought expected in a period of 20 years. There is a clear gradient from west to southeast, inferring that the coastal areas are most sensitive to precipitation deficits. However, it is known that most fires occur in the east of the country (Federal Public Service Internal Affairs, 2013). Therefore, we concluded that both the available annual rainfall and drought sensitivity map were not suitable for modelling the ignition probability. Given the fact that most anthropogenic wildfires are controlled by drought (Burk, 2005), we advise future research to develop more suitable proxy variables for drought.

The road network is very dense across the entire country. In fact, the road density in Belgium is five times as high as the average for the European Union ( $5.1 \text{ km/km}^2$  versus  $1.1 \text{ km/km}^2$ ) (European Union Road Federation, 2016). Furthermore, in most cases the location of wildfire interventions by firefighters is identified by means of a residential address, i.e. municipality, street name, and number, possibly biasing the perception of wildfire occurrence in function of the distance to roads.

## 2.5 Quality Assessment

In total, three wildfire IPMs were constructed. The first ( $\text{IPM}_1$ ) is solely based on land cover class, the second one ( $\text{IPM}_2$ ) on land cover class and soil type, and the third one ( $\text{IPM}_3$ ) on land cover class, soil type, and land use class. For each IPM, the number of environments was kept lower than, or equal to 20.

In order to compare the quality of these three different IPMs, each one was constructed 23-fold, every time leaving out the wildfire data for one year. The average ignition probability at the wildfire locations of the discarded year served as a measure for model quality. For example, for the first of the 23 IPMs, we used the data between 1994 and 2015 for training, and the data of 2016 to validate whether the IPM predicts a high wildfire ignition probability at those locations where wildfires occurred in 2016. As such, an indication was obtained of how reliable the map reflected the ignition probability at locations that were effectively affected in the course of history. The IPM resulting in the highest average predicted ignition probabilities was considered to be the most accurate. We relied on the non-parametric Mann-Whitney  $U$  test to identify this IPM,

with a 5% level of significance (McDonald, 2014).

Next, the robustness of the best IPM was investigated. We assessed the influence of the inventory size on the model quality by constructing the IPM several times with datasets of increasing size. The first map was constructed with data from the period 1994–2000. Subsequently, we incrementally increased the length of the period from which data were used in the IPM construction stage with one year. As such, we constructed 13 IPMs, the first one with data from the period 1994–2000, the last one with data from the period 1994–2012. The quality of each of these 13 IPMs was assessed by calculating the average ignition probability retrieved at wildfire locations during the period 2013–2016. The robustness of each of the 13 IPMs was tested by constructing each of the IPMs 100 times with 90% of the data, randomly selected. This approach allowed us to construct a boxplot of the corresponding average ignition probabilities in the 13 IPMs. The range of these probabilities is a proxy for the robustness.

## 3 Results & Discussion

### 3.1 Wildfire inventory for Belgium

**Spatial distribution** In total, 385 wildfires were recorded, from which 273 were assigned GPS coordinates. The wildfire locations are displayed in Fig. 1. In Flanders, the northern half of Belgium, the eastern provinces of Antwerp and Limburg clearly show a higher wildfire risk and prevalence than the other provinces. In Wallonia, the southern part of Belgium, wildfires seem to be less rampant and occur mainly in the east and south-west parts of the region. An explanation for the distribution of these wildfires can be sought in the social, economical and technological shifts of the 19<sup>th</sup> century and their impact on land use/cover (Buis, 1985).

In Flanders, the omnipresent heathland, characterized by poor, sandy soils, was afforested in the eastern provinces with *Pinus sylvestris*, while the forests on the rich soils in the west were cleared for agricultural practices (den Ouden et al., 2010). Present-day, both forests and heathland are relatively more common in Limburg and Antwerp than in the rest of Flanders (Hermy et al., 2004), thus it is expected that the average wildfire risk in these two provinces is higher than in the other Flemish provinces.

In Wallonia, the relative forested area is three times as high as the one in Flanders, 32.0% versus 11.4% (Walloon Government and the European Commission, 2015; Stevens et al., 2015). The forested areas are mainly concentrated in the eastern provinces of Liège and Luxembourg. The typical tree species that is used for afforestation in this region is *Picea abies*, a coniferous species associated with a very high wildfire sensitivity (Goldammer and Furyaev, 2013), which would explain a relatively high number of wildfire occurrences in the latter two provinces. As expected, the nature reserve les Hautes Fagnes (in the eastern part of Liège) and its surrounding area show a higher prevalence because of its fens, which get dry easily in the absence of rain.

Unfortunately, precise data on the size of wildfires were very scarce. Most wildfires covered small areas (<1ha). Though for some major events, relatively accurate estimates of the burnt area could be provided (San-Miguel-Ayanz et al., 2012a). An interesting observation is that major events occurred in heathland or fen. It seems that

wildfires in such land cover are less controllable than those in coniferous or deciduous forests. This can be understood by the fact that heathlands and fens are largely covered with shrubs and grass that ignite easily, and hence allow the wildfire to propagate rapidly, once it has started. In 2011, a series of wildfires raged through three nature areas: the High Fens, de Kalmthoutse Heide (heathland) and the military domain in Meeuwen, destroying respectively 1000, 500 and 360 ha. In total, 2180.39 ha of land were burnt that year, mainly Natura 2000 sites (Schmuck et al., 2012).

**Temporal distribution** Contrary to the statement of the Federal Public Service Internal Affairs (2013) that there are two periods with an elevated wildfire occurrence (April–May and August), the data displayed in Fig. 5 (a) indicate that the number of ignitions peaks in April. This can be explained by the seasonal rainfall pattern, which shows that April is the month with the lowest precipitation (Journée et al., 2015). The frequency drops rapidly in May and June, and remains stable in July and August, despite the fact that these months display the highest average temperatures (Federal Public Service Internal Affairs, 2013). This observation confirms the hypothesis of Burk (2005) that human induced wildfires are more controlled by precipitation than temperature. Outside the period April–August, wildfires are rather scarce.

Figure 5 (b) shows the number of wildfires per year for the period 1995–2015. The data for 1994 was omitted because almost no newspapers were digitized for this period, and the wildfires for 2016 were not included in the graphic because, at the time this research was conducted, the year had not yet passed. The figure shows clearly that there is a great variability in the number of wildfires between different years. A critical note is that for the period 2010–2013, the data were more complete (because a list with wildfire interventions was provided by the government), possibly explaining the higher number of wildfires in these years. Due to this lack of a standardized registration approach, it was not possible to compare the number of ignitions to climatic data and derive reliable relationships. Nonetheless, in 2003, the number of wildfires is extremely high as a consequence of the extremely warm and dry summer (Eysker et al., 2005).

**Ignition Sources** This research made it clear that cigarettes, arson and military exercises were major drivers of ignition, even records have been found that support the hypothesis that pieces of glass can trigger a fire through the redirection and focusing of sunlight (Timperman and Willekens, 1999). No reports were found of natural ignition causes such as lightning. In other words, humans are the main driver of wildfires in Belgium. This is consistent with other regions in Europe, e.g. the Mediterranean area, where 95% of the ignitions can be attributed to human causes (San-Miguel-Ayanz et al., 2012b).

## 3.2 Creating environments

Figure 6 shows the comparison between the observed and expected ignition frequencies for each variable, whereby the expected ignition frequency was calculated as the proportion of the total study area of each category of that specific variable. As the non-parametric  $\chi^2$  test of independence proved, the land cover class clearly influenced the wildfire ignition probability ( $\chi^2 = 206.4$ ,  $p < 0.05$ ). Likewise, soil type had a significant

impact on the prevalence of wildfire ignitions ( $\chi^2 = 100.4$ ,  $p < 0.05$ ), as did land use class ( $\chi^2 = 198.2$ ,  $p < 0.05$ ).

The first IPM was constructed by taking into account land cover classes, which gave us 10 possible environments. These are displayed in Fig. 3 (a). For the construction of the second IPM, we observed the discrepancies between the observed and expected number of wildfires (Fig. 6) to create three land cover classes: (i) forests (covering 25.44% of the area), by merging deciduous, mixed, and coniferous forests, (ii) shrubland (2.84%), by grouping heathland and shrubland, and (iii) a third class containing the remaining land cover classes (71.72%). So 18 environments remained for the second IPM. The third IPM was based on simplified land cover, soil, and land use maps. The simplified soil map was composed of (i) sand (21.35%), (ii) wetlands/fens (0.48%), and (iii) other soil types (78.17%). The simplified land use map distinguished between three classes: (i) military domains (1.18%), (ii) nature areas (25.43%), and (iii) other uses (73.39%). In total, 27 environments were defined for the third IPM. However, this number was reduced to 20 by merging some of the environments for which no or very few wildfires were registered. For example, all environments that were military domain and not situated on a sandy soil were merged since all of these together contained only one registered wildfire.

### 3.3 Ignition Probability Maps

Figure 7 shows, for each of the three IPMs, the 23 different average wildfire ignition probabilities observed at the wildfire locations that were not used for the IPM construction. The Mann-Whitney  $U$  test showed that there was no significant difference in the medians of IPM<sub>1</sub>, and IPM<sub>2</sub> ( $p = 0.7584$ ). However, the IPM<sub>3</sub> had a significantly higher median than IPM<sub>1</sub> ( $p < 0.05$ ) and IPM<sub>2</sub> ( $p < 0.05$ ). Hence, IPM<sub>3</sub>, based on three covariates, was considered the best wildfire ignition probability model.

From Fig. 8, we infer that the quality of the IPM increases with an increasing inventory, though this effect only manifests itself clearly for datasets with data from 1994 to 2010 or later. It can also be observed that the robustness of the IPM increases substantially for the smaller datasets, while, for datasets larger than the one that contains the data from the period 1994–2004, the quantiles of the boxplots appear at more or less the same values.

The final IPMs were constructed with all 273 data points. Table 1 shows the area of each risk class in the three different IPMs. These classes were defined on the basis of visible gaps in the histograms showing the relative frequency of the number of registered wildfires located in an environment with a particular ignition probability (Fig. 9). The class limits were selected in such a way they were equal for each risk map. The ignition risk classes were ‘low’, ‘intermediate’, ‘high’, and ‘very high’, corresponding to the ignition probability intervals  $[0, 0.025 \times 10^{-6}]$ ,  $[0.025 \times 10^{-6}, 0.12 \times 10^{-6}]$ ,  $[0.12 \times 10^{-6}, 0.4 \times 10^{-6}]$ , and  $[0.4 \times 10^{-6}, 1]$ , respectively.

The IPM leading to the highest probabilities assigned to the wildfire ignition points is the one that considers land cover class, soil type, and land use class; hence, such an IPM was constructed with all 273 ignition points (Fig. 10). The average ignition probability assigned to all data points was  $0.045 \times 10^{-6}$  wildfire ignitions per year and per 10 m x 10 m grid cell. The relative area per risk class for each province is presented in Table 2. As expected for Flanders, the provinces of Antwerp and Limburg have the largest high-risk area. In Wallonia, the provinces of Liège and Luxembourg appear to



be most sensitive to wildfires.

The maximum calculated probability for the final IPM was  $0.85 \times 10^{-6}$ . Following Eq. (5), this means that within such an area of 100 ha, a wildfire is expected one every 118 years. Note that the maximum calibrated probability is extremely low compared to the results obtained with logistic regression or machine learning. Using these techniques, probabilities as high as 0.8 were observed for a significant portion of the study area (e.g. Martinez et al., 2008; Catry et al., 2009; Massada et al., 2012). However, these values cannot be interpreted as ignition probabilities, but rather as the similarity between the spatial characteristics of a given pixel and the average spatial characteristics of historical wildfires.

## 4 Conclusion

It should be underlined that this study is a very first assessment of the wildfire ignition probability in Belgium, which is a determinant of wildfire hazard, and hence of wildfire risk (IPCC, 2012; San-Miguel-Ayaz et al., 2017). The study was been complicated by (i) the lack of literature on wildfires in Belgium, and (ii) the limited number of ignitions.

Existing wildfire literature is often restricted to a description of the wildfire impact on ecosystems (e.g. Marrs et al., 2004; Jacquemyn et al., 2005; Schepers et al., 2014). The only well-described wildfire damage occurred in natural areas, like in 2011, when 2144 hectares of natural areas were consumed by flames within the Natura 2000 network (San-Miguel-Ayaz et al., 2012a). The lack of literature on the damage to properties and human livelihoods is understandable, as no evidence of such events could be produced.

Not surprisingly, given the fact that wildfire occurrence and damage are rare in Belgium, the number of instances included in the used wildfire database was relatively limited. The database compilation was even further complicated by the lack of a standardized registration procedure for interventions of emergency services in the case of wildfires. However, It can be expected that more data will become available in the near future, due to (i) an increased interest of policy makers in wildfires motivated by the fact that wildfires might occur more frequently in the future (Federal Public Service Internal Affairs, 2013), and (ii) because of a standardization of wildfire registration by fire brigade interventions.

In order to calculate the ignition probability, we used a straightforward data-driven approach relying on Bayes' rule. Contrary to other approaches (e.g. Martinez et al., 2008; Catry et al., 2009; Massada et al., 2012), this resulted in meaningful ignition probabilities that can be interpreted as such. Moreover, we demonstrated that this approach can be used to obtain a conservative estimate of the ignition probability in a certain area. Our method involved the delineation of environments through the combination of predictor classes. Because of the limited number of wildfires, it was necessary to limit the number of environments to 20, and hence the number of covariates to 3. In this way, it could be concluded that the approach relying on exactly three covariates (land cover, soil, and land use) leads to the most reliable wildfire risk map, which is, moreover, robust to an increase in the number of wildfires in the underlying database.

In line with the spatial wildfire distribution (Fig. 1), the provinces of Limburg and Antwerp display the highest probabilities (Table 2), which can be explained by the

relatively large areas covered by heathland and coniferous forest, and the presence of military training areas. As such, these provinces should receive a proportionally higher share of the available means for wildfire prevention and suppression.

A final remark is that most causative factors are human. Anthropogenic ignition causes such as military explosions, arsons, cigarettes, campfires, and broken glass have been reported, while natural ignitions such as lightning strikes appear to be exceptional. It seems that the best way of preventing wildfires is perhaps to exclude military exercises in fire-prone areas during the months April to August. Furthermore, improvement in fire detection methods could be made (e.g. the use of drones), the lack of heavy fire-fighting equipment such as planes should be compensated through an increased cooperation with foreign emergency services, the available resources should be located in function of the most fire-prone areas, and the awareness of the general public could be raised, so that people become more aware of the danger they pose to the natural environment. In the context of global change and the expected increase in extreme weather events such as dry spells and heath waves, a well-considered and elaborate wildfire management will gain more and more importance in Belgium.

## References

- ANB. 2017. Bos en heide brandbestrijding. Available at <http://www.kalmthout.be/brandweer-bos-en-heide-brandbestrijding.html> [Verified 15 October 2017]
- Belga. 2013. Franse blusvliegtuigen oefenen bestrijding van bosbrand in Hoge Venen. Knack
- Belgian Federal Government. 2016. Over België. Available at [http://www.belgium.be/nl/over\\_belgie/land](http://www.belgium.be/nl/over_belgie/land) [Verified 11 August 2016]
- Bond WJ, van Wilgen BW. 1996. Fire and Plants. Chapman & Hall, London, UK
- Buis J. 1985. 'Historia Forest: Nederlandse Bosgeschiedenis.'. HES Uitgevers: 't Goy, the Netherlands
- Burk AR (ed.) . 2005. New research on Forest Ecosystems. Nova Science Pub Inc, Hapauge, NY
- Catry FX, Rego FC, Bacao FL, Moreira F. 2009. Modeling and mapping wildfire ignition risk in Portugal. International Journal of Wildland Fire 18 : 1–11. doi: 10.1071/WF07123
- Chaparro D, Vall-Iloera M, Piles M, Camps A, Rüdiger C. 2015. Low soil moisture and high temperatures as indicators for forest fire occurrence and extent across the Iberian Peninsula. In: 2015 IEEE International Geoscience and Remote Sensing Symposium. 3325–3328. doi:10.1109/IGARSS.2015.7326530
- Chuvieco E, Cocero D, Riño D, Martín P, Martínez-Vega J, de la Riva J, Pérez F. 2004. Combining ndvi and surface temperature for the estimation of live fuel moisture content in forest fire danger rating. Remote Sensing of Environment 92: 322–331
- Dawid P, Earman J, Howson C, Miller D, Sober E. 2005. 'Bayes's theorem.'. Oxford university press: Oxford, England. doi:<http://dx.doi.org/10.5871/bacad/9780197263419.001.0001>
- den Ouden J, Muys B, Mohren F, Verheyen K (eds.) . 2010. Boscologie en Bosbeheer. Acco: Leuven, Belgium
- Dickson BG, Prather JW, Xu Y, Hampton HM, Aumack EN, Sisk TD. 2006. Mapping the probability of large fire occurrence in northern Arizona, USA. Landscape Ecology 21 : 747–761. doi:DOI10.1007/s10980-005-5475-x
- Doerr SH, Santin C. 2016. Global trends in wildfire and its impacts: perceptions versus realities in a changing world. Philosophical Transactions of the Royal Society B 371. doi:10.1098/rstb.2015.0345
- Eisenman D, McCaffrey S, Donatello I, Marshal G. 2015. An ecosystems and vulnerable populations perspective on solastalgia and psychological distress after a wildfire. EcoHealth 12: 602–610
- European Union Road Federation. 2016. Road Statistics, Yearbook 2016

- Eysker M, Bakker N, Kooyman FN, van der Linden D, Schrama C, Ploeger HW. 2005. Consequences of the unusually warm and dry summer of 2003 in The Netherlands: Poor development of free living stages, normal survival of infective larvae and long survival of adult gastrointestinal nematodes of sheep. *Veterinary Parasitology* 133 : 313–321. doi:10.1016/j.vetpar.2005.05.058
- Federal Public Service Internal Affairs. 2013. Nationaal Actieplan Natuurbranden. Brussels, Belgium
- Giglio L, Randerson JT, van der Werf GR, Kashibhatla PS, Collatz GJ, Morton DC, DeFries RS. 2010. Assessing variability and long-term trends in burned area by merging multiple satellite fire products. *Biogeosciences* 7 : 1171–1186. doi:https://doi.org/10.5194/bg-7-1171-2010
- Goldammer JG, Furyaev V. 2013. 'Fire Ecosystems of Boreal Eurasia.'. Springer Science & Business Media: Dordrecht, The Netherlands
- Hardy CC. 2005. Wildland fire hazard and risk: problems, definitions, and context. *Forest and Ecology Management* 15 : 2097–2108. doi:10.1016/j.foreco.2005.01.029
- Hermijne M, de Blust G, Sootmaekers M. 2004. 'Natuurbeheer.'. Davidsfonds: Leuven, Belgium
- IPCC. 2012. Managing the risks of extreme events and disasters to advance climate change adaptation
- IPCC. 2014. Climate Change 2014: Synthesis Report. Contribution of Working Groups I, II and III to the Fifth Assessment Report of the Intergovernmental Panel on Climate Change. IPCC: Geneva, Switzerland
- Jacob JP, Paquet JY. 2011. Nieuwe waalse broedvogelatlas 2001-2007. *Natuur.oriolus* 77 : 39–47
- Jacquemyn H, Brys R, Neubert MG. 2005. Fire increases invasive spread of *molinia caerulea* mainly through changes in demographic parameters. *Ecological Applications* 15 : 2097–2108. doi:https://doi.org/10.1890/04-1762
- Journée M, Delvaux C, Bertrand C. 2015. Precipitation climate maps of Belgium. *Advances in Science and Research* 12: 73–78
- Kaleita AM, Tian LF, Hirschi MC. 2005. Relationship between soil moisture content and soil surface reflectance. *Transactions of the ASAE* 48: 1979–1986
- Kolden CA, Weigel TJ. 2007. Fire risk in San Diego County, California: a weighted Bayesian model approach. *The Californian Geographer* 47 : 42–60
- Liekens I, Schaafsma M, De Nocker L, Steven B, Staest J, Aertsens J, Brouwer R. 2013. Developing a value function for nature development and land use policy in Flanders, Belgium. *Land Use Policy* 30 : 549–559. doi:10.1016/j.landusepol.2012.04.008

- Liu GC, Pereira G, Uhl SA, Bravo MA, Bell ML. 2014. A systematic review of the physical health impacts from non-occupational exposure to wildfire smoke. *Environmental Research* 136 : 120–132
- Log T, Thuestad G, Velle LG, Khattri SK, Kleppe G. 2017. Unmanaged heathland a fire risk in subzero temperatures? *Fire Safety Journal* 90: 62–71. doi:10.1016/j.firesaf.2017.04.017
- Marrs RH, Phillips JD, Todd PA, Ghorbani J, Le Duc MG. 2004. Control of *Molinia caerulea* on upland moors. *Journal of Applied Ecology* 41 : 398–411. doi:10.1111/j.0021-8901.2004.00901.x
- Martinez J, Chuvieco E, Martin P, Gonzalez-Caban A. 2008. Estimation of Risk Factors of Human Ignition of Fires in Spain by Means of Logistic Regression. In: 'Second International Symposium on Fire Economics, Planning and Policy: A Global View. Albany.'. doi:https://doi.org/10.2737/PSW-GTR-208
- Massada A, Syphard A, Stewart S, Radeloff V. 2012. Wildfire ignition-distribution modelling: A comparative study in the Huron-Manistee National Forest, Michigan, USA. *International Journal of Wildland Fire* 22 : 174–183. doi:https://doi.org/10.1071/WF11178
- McDonald J. 2014. 'Handbook of Biological Statistics.'. Sparky House Publishing: Baltimore, MD, 3<sup>rd</sup> edition
- Meersmans J, Van Weverberg K, De Baets S, De Ridder F, Palmer SJ, van Wesemael B, Quine TA. 2016. Mapping mean total annual precipitation in belgium, by investigating the scale of topographic control at the regional scale. *Journal of Hydrology* 540: 96–105. doi:10.1016/j.jhydrol.2016.06.013
- Miller C, Ager AA. 2013. A review of recent advances in risk analysis for wildfire management. *International Journal of Wildland Fire* 22: 1–14. doi:10.1071/WF11114
- Ministry of Justice and Security. 2015. Memorandum van overeenstemming over de uitvoering van fire bucket operations. *Staatscourant* 7003
- National Wildlife Federation. 2008. Increased Risk of Catastrophic Wildfires: Global Warnings Wake-Up Call for the Western United States. National Wildlife Federation Report. Reston, VA
- Navarro KM, Schweizer D, Balmes RJ, Cisneros R. 2018. A review of community smoke exposure from wildfire compared to prescribed fire in the United States. *Atmosphere* 9: 185. doi:10.3390/atmos9050185
- North BM, Stephens SL, Collins BM, Agee JK, Aplet G, Franklin JF, Fulé PZ. 2015. Reform forest fire management. *Science* 349 : 1280–1281. doi:10.1126/science.aab2356
- Penman TD, Nicholson AE, Bradstock RA, Collins L, Penman SH, price OF. 2015. Reducing the risk of house loss due to wildfires. *Environmental Modelling & Software* 67: 12–25

- Preisler H, Brillinger D, Burgan R, Benoit J. 2004. Probability based models for estimation of wildfire risk. *International Journal of Wildland Fire* 13 : 133–142. doi: 10.1071/WF02061
- Randerson JT, Chen Y, van der Werf GR, Rogers BM, Morton DC. 2012. Global burned area and biomass burning emissions from small fires. *Journal of Geophysical Research* 117 : G04012. doi:10.1029/2012JG002128
- Rodrigues M, de la Riva J. 2014. An insight into machine-learning algorithms to model human-caused wildfire occurrence. *Environmental Modelling & Software* 57 : 201. doi:10.1016/j.envsoft.2014.03.003
- San-Miguel-Ayanz J, Chuvieco E, Handmer J, Moffat A, Montiel-Molina C, Sandahl L, Viegas D. 2017. *Climatological Risk*, European Commission, Ispra, Italy, 294–305
- San-Miguel-Ayanz J, Durrant T, Boca R, Camia A. 2012a. Forest Fire Damage in Natura 2000 sites 2000-2012. European Commission and Joint Research Centre Scientific and Technical Research Report. Ispra, Italy. doi:10.2788/58397
- San-Miguel-Ayanz J, Schulte E, Schmuck G, Camia A, Strobl P, Liberta G, Giovando C, Boca R, Sedano F, Kempeneers P, McInerney D, Withmore C, de Oliveira SS, Rodrigues M, Durrant T, Corti P, Vilar FOL, Amatulli G. 2012b. Comprehensive Monitoring of Wildfires in Europe: The European Forest Fire Information System (EFFIS). European Commission, Joint Research Centre and Directorate-General Environment Joint Report. Ispra, Italy
- Schepers L, Haest B, Veraverbeke S, Spanhove T, Vanden Borre J, Goossens R. 2014. Burned area detection and burn severity assessment of a heathland fire in Belgium using airborne imaging spectroscopy (apex). *Remote Sensing* 6 : 1803–1826. doi: 10.3390/rs6031803
- Schmuck G, San-Miguel-Ayanz J, Camia A, Durrant T, Boca R, Libert'a G, Petroliaqkis T, Di Leo M, Rodrigues D, Boccacci F, Schulte E. 2012. Forest Fires in Europe, Middle East and North Africa 2011. European Commission, Joint Research Centre and Directorate-General Environment Joint Report. Ispra, Italy. doi:10.2788/44558
- Stevens M, Demolder H, Jacobs S, Schneiders A, Simoens I, Spanhove T, Van Gossum P, Van Reeth W, Michels H, Peymen J. 2015. Flanders Regional Ecosystem Assessment: State and trends of ecosystems and their services in Flanders. Research Institute for Nature and Forest Communications of the Research Institute for Nature and Forest. Brussels, Belgium
- Syphard AD, Bar Massada A, Butsic V, Keeley JE. 2013. Land use planning and wildfire: development policies influence future probability of housing loss. *Plos ONE* 8 : e71708
- the European Parliament, the European Council. 2013. Regulation (eu) no 1305/2013 of the European parliament and of the council of 17 december 2013 on support for rural development by the European agricultural fund for rural development (eafrd) and repealing council regulation (ec) no 1698/2005. *Official Journal of the European Union* 56 : 487–548

- Timperman B, Willekens G. 1999. Brandgevaar dreigt in bossen - snel ingrijpen van Geelse, Molse en Grobbendonkse spuitgasten voorkomt erger. *Gazet Van Antwerpen* : July 30 1999
- United Nations. 2015. List of countries by population density. Available at <http://statisticstimes.com/population/countries-by-population-density.php> [Verified at 24 August 2016]
- Van Butsic MK, Moritz MA. 2015. Land use and wildfire: A review of local interactions and teleconnections. *Land* 4: 140–156. doi:10.3390/land4010140
- Vandenberghe R, Laurijssens G, Vandekerkhove K, De Blust G. 2009. Geïntegreerd bos- en natuurbeheerplan voor het Schietveld Helchteren. INBO Nature Management Plan. Brussels, Belgium
- Vilar del Hoyo L, Isabel M, Vega F. 2011. Logistic regression models for human-caused wildfire risk estimation: analysing the effect of the spatial accuracy in fire occurrence data. *European Journal of Forest Research* 130 : 983–996. doi:<https://doi.org/10.1007/s10342-011-0488-2>
- Walloon Government, the European Commission. 2015. Programme Wallon de Développement Rural 2007-2013. Service Public de Wallonie. Jambes, Belgium
- Waumans F, Geudens G, Wijns K. 2009. Beheerplan militair domein Vrijbos - Houthulst. ANB Nature Management Plan. Holsbeek, Belgium
- Youssef H, Liousse C, Roblou L, Assamoi E, Salonen RO, Maesano C, Banerjee S, Annesi-Maesano I. 2014. Non-accidental health impacts of wildfire smoke. *International Journal of Environmental Research and Public Health* 11 : 11772–11804
- Zamani S, Gobin A, Van de Vyver H, Gerlo J. 2016. Atmospheric drought in Belgium – statistical analysis of precipitation deficit. *International Journal of Climatology* 36: 3056–3071. doi:10.1002/joc.4536

## Tables

Table 1: Relative areas (%) per risk class for the three IPMs and the average probability assigned to the ignition points.

<b>Risk</b>	<b>Interval (<math>\times 10^{-6}</math>)</b>	<b>Land cover</b>	<b>Land cover &amp; soil</b>	<b>Land cover, soil &amp; land use</b>
Low	0.000 – 0.025	71.72	73.81	71.29
Intermediate	0.025 – 0.120	23.05	15.14	21.86
High	0.120 – 0.400	4.52	10.27	6.36
Very High	> 0.400	0.71	0.78	0.48
Score ( $\times 10^{-6}$ )		0.28	0.31	0.45



Table 2: The relative area (%) per risk class for the Belgian provinces and the capital region of Brussels.

Region	Province	Low	Intm.	High	Very high
Flanders	Antwerp	71.38	7.98	19.30	1.34
	Flemish Brabant	82.03	13.01	4.83	0.13
	West-Flanders	94.62	2.23	3.10	0.06
	East-Flanders	88.30	6.38	5.17	0.15
	Limburg	66.95	8.38	20.79	3.88
Wallonia	Hainaut	81.20	16.14	2.60	0.06
	Walloon Brabant	85.85	10.49	3.62	0.05
	Liège	63.42	33.69	2.89	0.00
	Luxembourg	46.20	49.26	4.39	0.15
	Namur	60.88	38.68	0.45	0.00
	Brussels	70.98	29.01	0.01	0.00

## Legends

**Figure 1:** Belgium, its ten provinces and the Brussels Capital Region. The map displays the Wildfire ignitions in Belgium between 1994–2016 and the major military domains (Section 3.1). The population densities were provided by the NGI (<http://www.ngi.be/NL/NL1-5-2.shtm>, accessed on October 11, 2017). **A:** de Kalmthoutse Heide, **B:** les Hautes Fagnes.

**Figure 3:** (a) Land cover class, (b) soil type, and (c) land use in Belgium.

**Figure 4:** (a) The average annual rainfall in Belgium (Meersmans et al., 2016), and (b) the 20-year return level of a precipitation deficit expressed in days, and calculated in reference to the evapotranspiration rates of coniferous forests (Zamani et al., 2016).

**Figure 2:** A schematic representation of the methodology used in this paper to calculate the wildfire ignition probability. In **stage I**, we assess the significance of the impact on wildfire ignition of the three predictors, and we outline three models, each with a different parameter set. In **stage II**, no more than 20 unique environments are created per model through the combination of different predictor classes. We then use Bayes' rule to calculate the ignition probability observed in each environment. **Stage III** comprises the selection of the best model and assessing its robustness, or, in other words, the impact of the inventory size on the model's prediction average and variance.

**Figure 6:** The expected and observed ignition frequency in relation to the distribution of the (a) land cover, (b) soil, and (c) land use classes.

**Figure 5:** (a) the monthly relative ignition frequency between 1994–2016, and (b) the number of ignitions per year.

**Figure 7:** The average ignition probability observed in the data points that were not used for the construction of the IPM.

**Figure 8:** An illustration of the dependency on the number of data points of the robustness of the risk map. The boxplots show the robustness of the risk map in function of the data period that was used for construction, from 1994 to the upper limit. The line shows the actual number of data points, used for model training.

**Figure 9:** Frequency of the calculated probabilities in the IPMs constructed with land cover class (a), land cover class and soil type (b), and land cover class, soil type, and land use class (c) and the indication of the four risk class intervals.

**Figure 10:** The ignition probability map constructed with land cover class, soil type, and land use class.

## Figures

Figure 1:

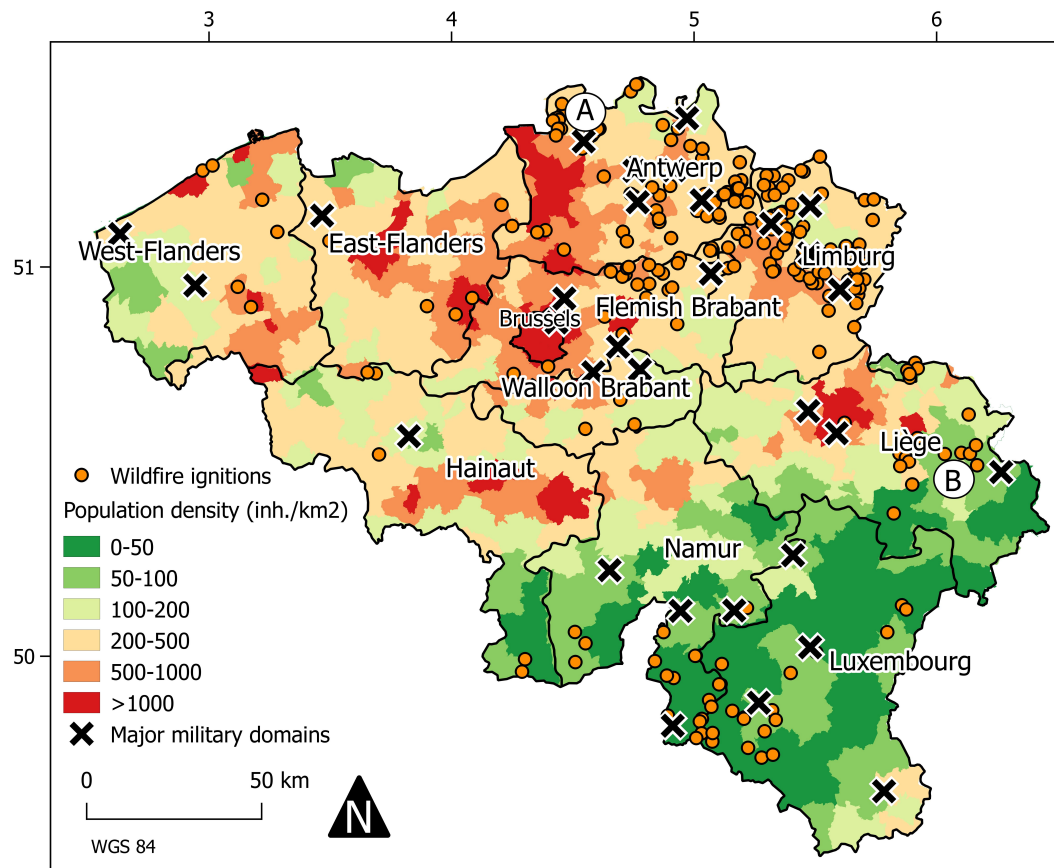


Figure 2:

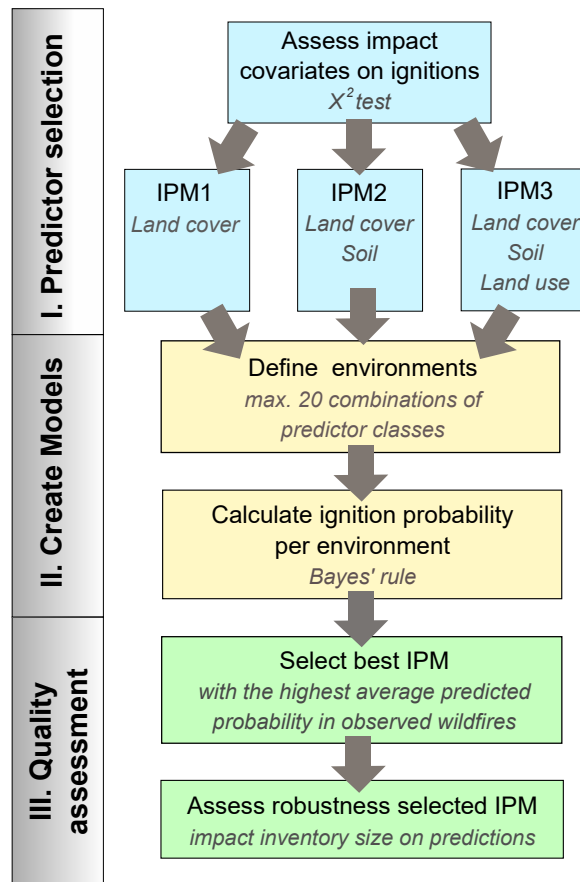
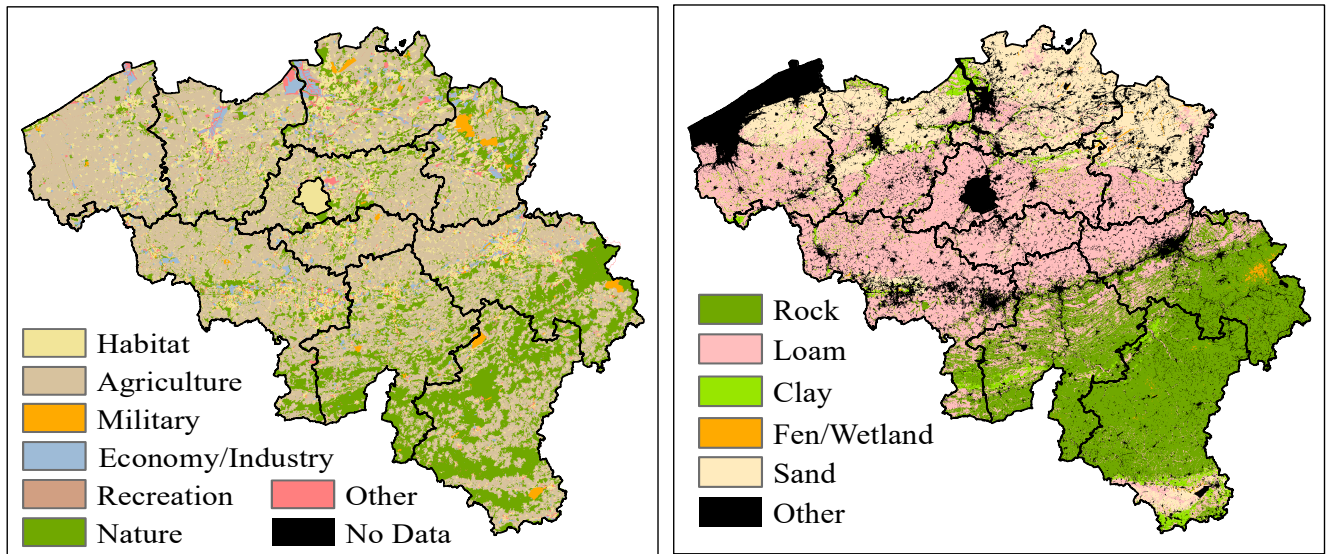
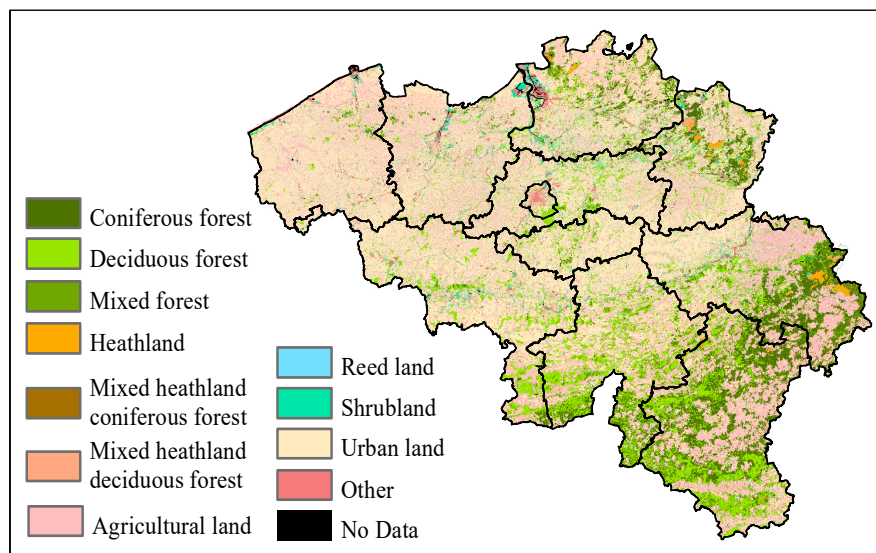


Figure 3:



(a) Land use

(b) Soil



(c) Land cover

Figure 4:

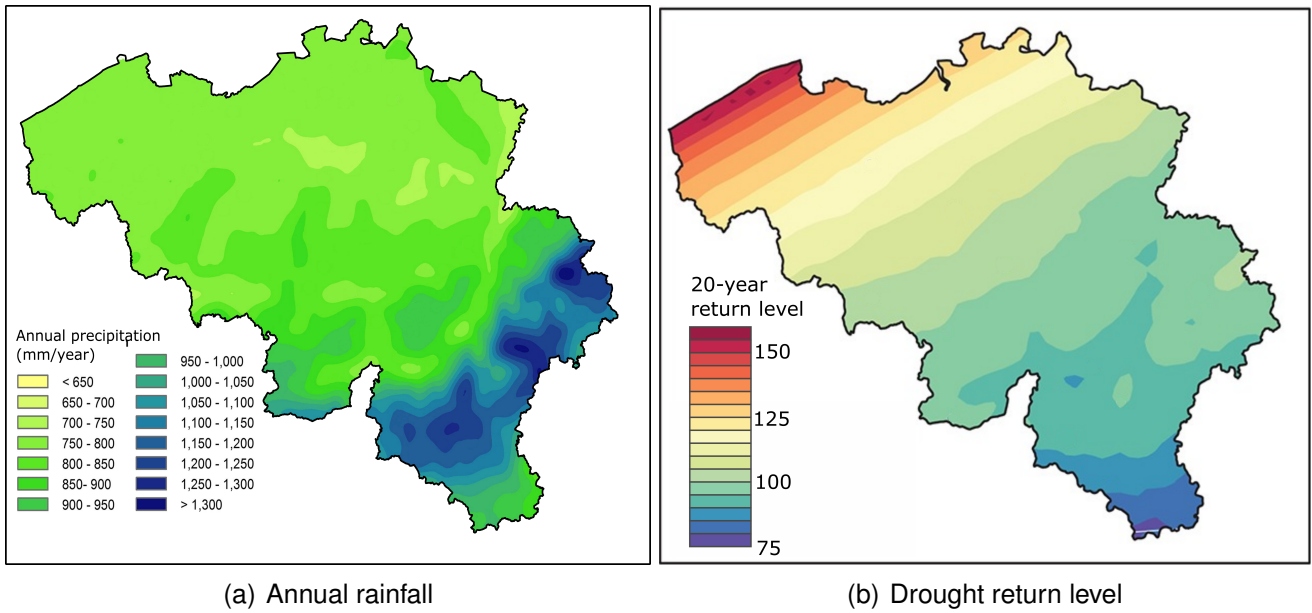
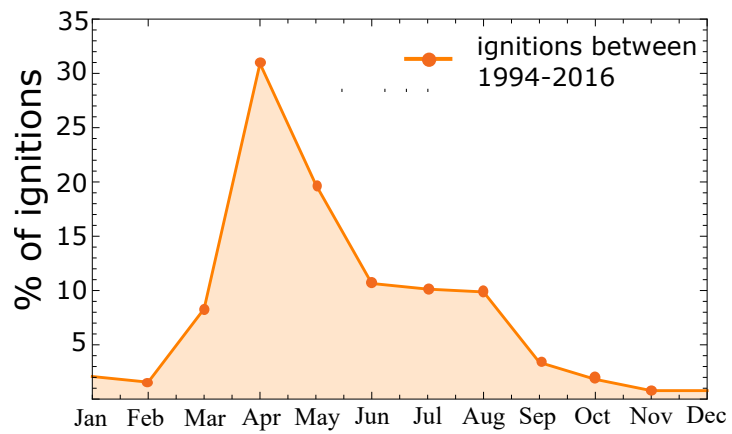
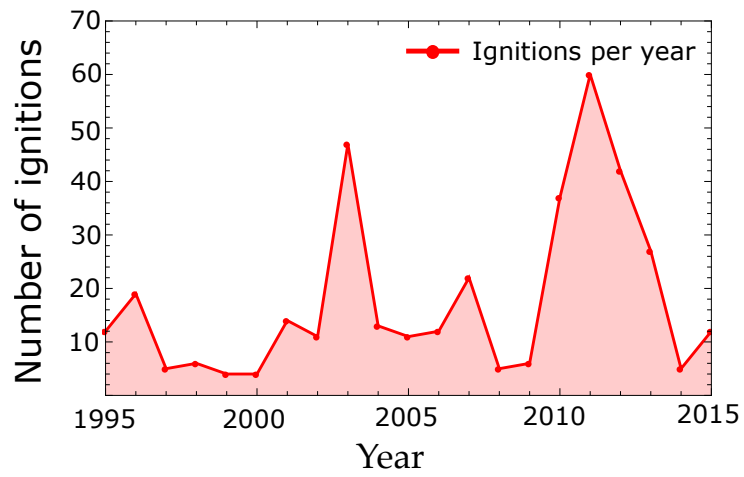


Figure 5:

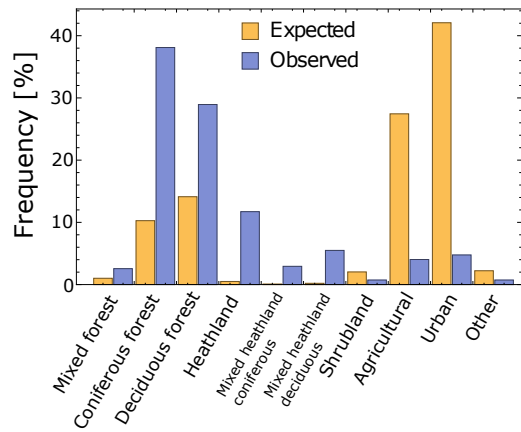


(a)

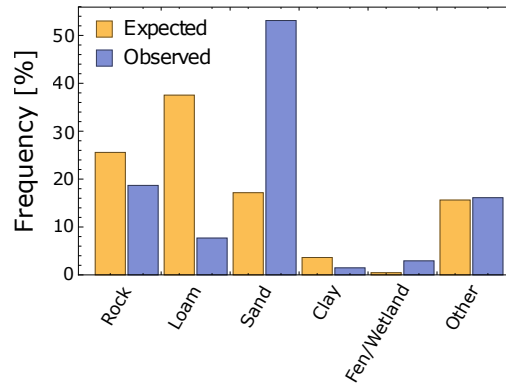


(b)

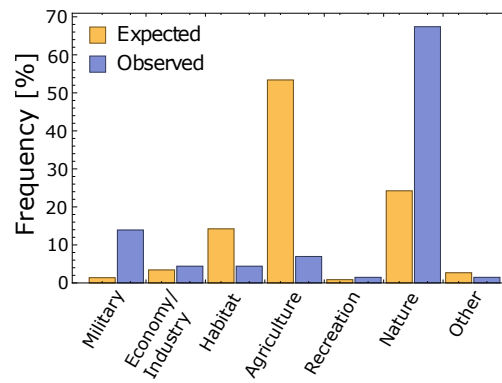
Figure 6:



(a) Land cover



(b) Soil



(c) Land use



Figure 7:

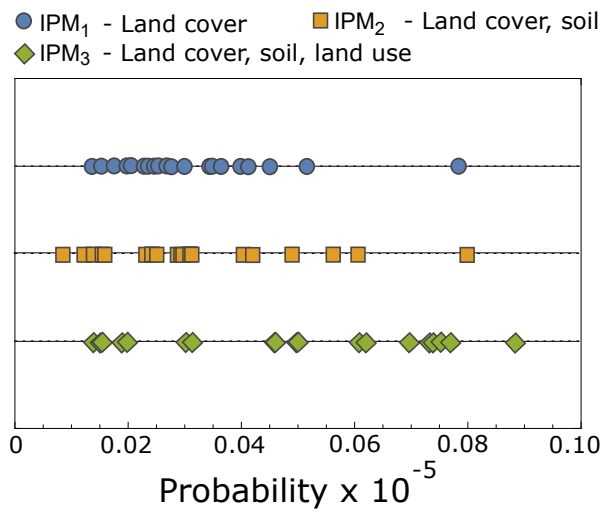


Figure 8:

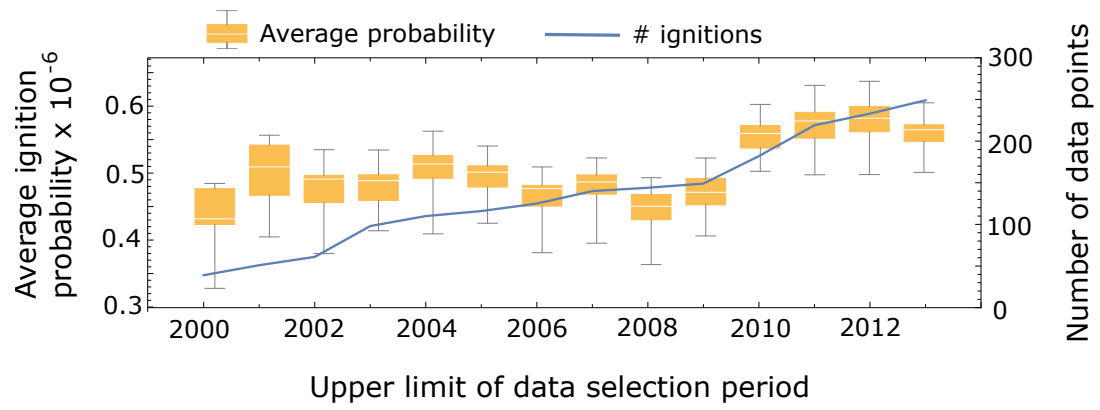
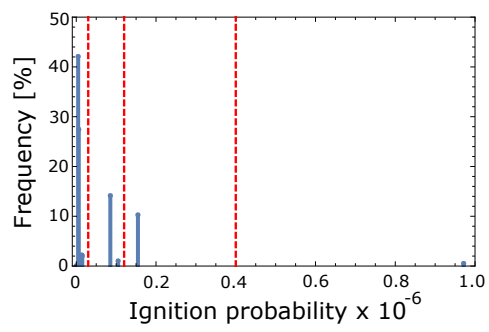
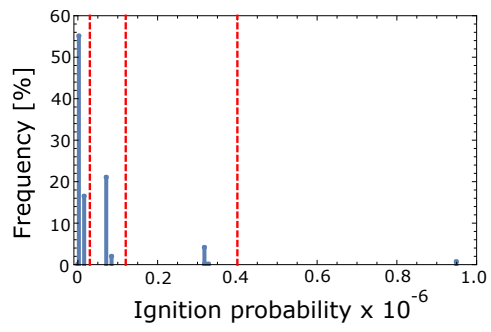


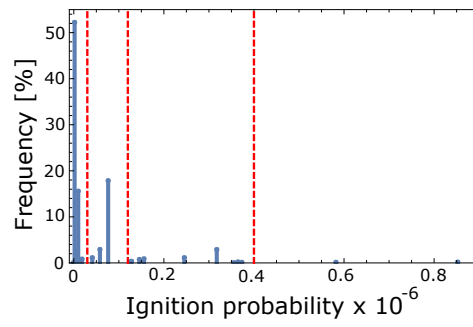
Figure 9:



(a) Land cover



(b) Land cover & soil



(c) Land cover, soil & land use

Figure 10:

